

Sophos UTM Accelerated (9.2)

Advanced protection gets faster and smarter

It's never been more important to have smart solutions for uncompromising security and communications. That's why the new version of our UTM offers an abundance of new features, which help businesses stay secure in today's fast-paced, mobile world. It's all about increasing the speed of detection and administration, providing simple and more effective security.

Highlights

- ▶ Advanced Threat Protection (ATP)
- ▶ Command-and-control detection
- ▶ Cloud-based selective sandboxing
- ▶ Performance optimized IPS
- ▶ SPX email encryption and DLP
- ▶ Improved web policy creation and testing
- ▶ Web policy control for SEC-managed endpoints
- ▶ Two-factor authentication

Advanced Threat Protection

We combine advanced threat protection, Intrusion Prevention System (IPS) and web-detection reporting to give you an instant view of infected clients with automatic admin alerts. Our command-and-control detection blocks communication with known C+C/Botnet servers. This process stops the infected client from calling home and allows you to quickly isolate the threat. In addition, our cloud-based selective sandbox uses Sophos Live Protection to analyze suspicious content and update protection, if required.

Simpler email encryption and DLP

Our SPX encryption encapsulates emails and attachments into an encrypted password-protected PDF that only the intended recipient can view. It requires no special software, works on any client or device and is fully accessible offline. Compliance with data protection regulations has never been easier, thanks to our simple policy-based email encryption. It works with SophosLabs' content-control lists, providing the predefined sensitive data types. In just a few clicks, you can set up policies to automatically encrypt emails containing sensitive data.

Smarter web control

Our UTM is now a full-featured enterprise-ready Secure Web Gateway. We've made enhancements to user-based policy and reporting, while improving our on-the-fly traffic management actions like shaping and blocking web applications. Our new advanced web malware protection uses powerful emulation capabilities to stop the latest obfuscated and polymorphic threats. And we've enhanced our Endpoint integration. Now, you can use the UTM to enforce web policy for your SEC managed endpoints too.

Faster network security

Our all-new IPS is performance-optimized for all multicore configurations. It even detects and optimizes for customer-supplied hardware and virtual deployments. This feature gives customers a substantial 50 to 100% performance boost, depending on the underlying hardware. A smarter set of defaults ensures the optimal use of resources. And with our time-based rule settings, customers can set IPS policies based on vulnerability age, intelligently maximizing the balance of protection and performance.

Additional highlights of UTM Accelerated (9.2)

Two-factor authentication

We're providing an additional level of access security in many key areas of the UTM—WebAdmin, User Portal, SSL and IPSec VPN, SSH, web application firewall (WAF) and wireless hotspots—using a one-time password (OTP).

WAF reverse authentication

Get offloading for form-based and basic authentication for server access. This is the ideal solution if you're looking to replace Microsoft TMG.

Device-specific web authentication

Tailor your authentication and filtering to the device being used. Select different methods for a wide range of mobile devices.

Customizable Wi-Fi hotspot branding

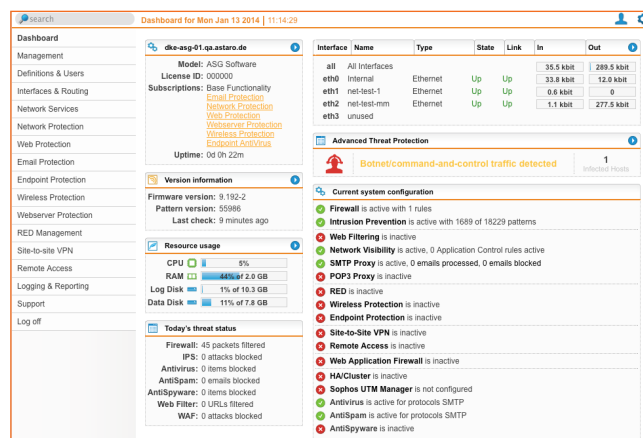
Promote your company brand with fully customizable hotspot vouchers and login pages. Using our templates, it's easy to create a professional impression for customers, guests and visitors.

Backend authentication for Wi-Fi hotspots

With existing user credentials from a database such as Active Directory, you can now automatically authenticate hotspot users.

RED compression of tunnel traffic

Optimize the use of bandwidth in areas with slow internet connections. Available for RED 50 rev. 1 and RED 10 rev. 2, 3 only.



The advanced threat protection widget on the dashboard quickly alerts you to infected clients.

The screenshot shows the **Request Details** form in the Sophos UTM Accelerated dashboard. The form is divided into two main sections:

- Destination Domain or URL:**
- Source IP Address:**
- User (optional):**
- Time and day (optional):**
- Request URL:**
- Request Time:** 06 Nov, 14:15 (PST)
- Result:** **Blocked**
- Reason:** Blocked by policy
- URL Category:** Job Search
- URL Reputation:** Trusted
- Filter Assignment:** Sales filter

A **Test** button is located at the bottom right of the form.

The web policy tester allows quick and easy troubleshooting for help desks and web admins.

Try it now for free

Register for a free 30-day evaluation at sophos.com/try-utm.

United Kingdom and Worldwide Sales
Tel: +44 (0)8447 671131
Email: sales@sophos.com

North American Sales
Toll Free: 1-866-866-2802
Email: nasales@sophos.com

Australia and New Zealand Sales
Tel: +61 2 9409 9100
Email: sales@sophos.com.au

Asia Sales
Tel: +65 62244168
Email: salesasia@sophos.com

Oxford, UK | Boston, USA
© Copyright 2014. Sophos Ltd. All rights reserved.
Registered in England and Wales No. 2096520, The Pentagon, Abingdon Science Park, Abingdon, OX14 3YP, UK
Sophos is the registered trademark of Sophos Ltd. All other product and company names mentioned are trademarks or registered trademarks of their respective owners.

1/14.NP.dsna

SOPHOS